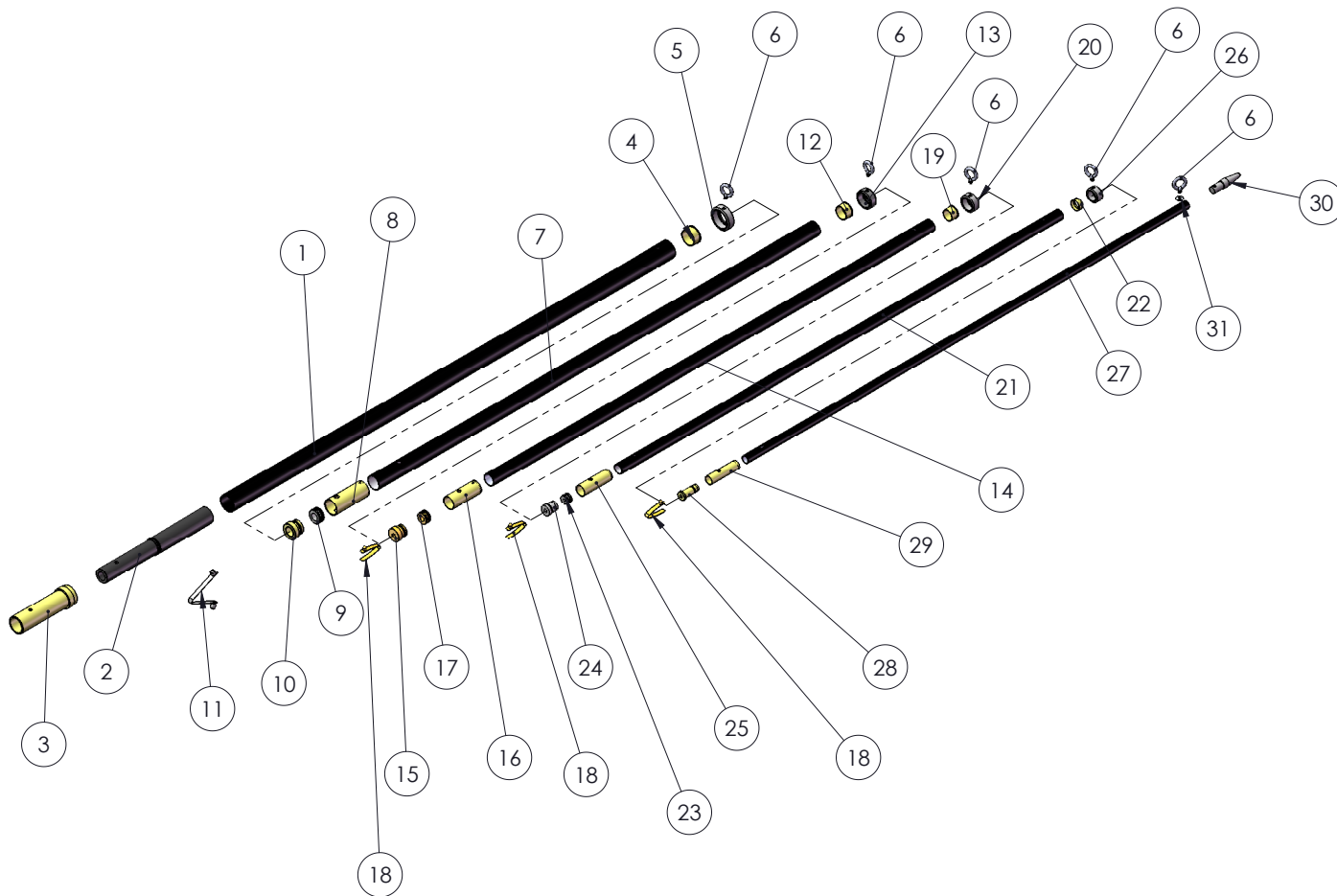


## ALUMINUM TELE-OUTRIGGER POLES REPLACEMENT PART DIAGRAM



ITEM NO.	PART NUMBER	DESCRIPTION
1	A23-1265BLB4	1-1/2"OD X .065 DRAWN TUBE
2	COT-0508AEY-A	BUTT FOR 1-1/2" TUBE AEY
3	COT-0510WHA	SLEEVE OUTER FOR 1-1/2"
4	COT-0407WHA	TOP HAT #4 F/1-1/4" TUBE
5	COT-0505BLY	RING #4 FOR 1-1/2" TUBE
6	F92-1199	EYE BOLT FOR OUT RIGGERS
7	A23-1449BLB4	1-1/4"OD X.049 DRAWN TUBE
8	COT-0406WHA	SLEEVE #4 FOR 1-1/4" TUB
9	COT-0402AEY	"H"SPACER FOR 1-1/4" TUBE
10	COT-0403WHA	BUNG #4 FOR 1-1/4" TUBE
11	F16-9000	SPRNG CLIP DOUBLE BUTTON
12	COT-0307WHA	TOP HAT #3 F/1-1/16" TUBE
13	COT-0405BLY	RING #3 FOR 1-1/4" TUBE
14	A23-1649BLB4	1-1/16"OD X.049 DRAWN
15	COT-0303WHA	BUNG #3 FOR 1-1/16" TUBE
16	COT-0306WHA	SLEEVE #3 FOR 1-1/16" TUB
17	COT-0302AEY	"H"SPACER FOR 1-1/16" TUBE
18	F16-8000	SPRNG CLIP SINGLE BUTTON
19	COT-0207WHA	TOP HAT #2 F/7/8" TUBE
20	COT-0305BLY	RING #2 FOR 1-1/16" TUBE
21	A23-7849BLB4	7/8" OD X .049 DRAWN TUBE
22	COT-0203WHA	BUNG #2/FEMALE F/7/8" TUB
23	COT-0202AEY	"H"SPACER FOR 7/8" TUBE
24	COT-0203AEY-1	BUNG/"M" FOR 7/8" TUBE
25	COT-0206WHA	SLEEVE #2 FOR 7/8" TUBE
26	COT-0205BLY	RING #1 FOR 7/8" TUBE
27	A23-1158BLB4	1 1/16" OD X .058 DRAWN
28	COT-0103WHA	BUNG #1 FOR 1 1/16" TUBE
29	COT-0106WHA	SLEEVE #1 FOR 1 1/16" TUBE
30	COT-0101BLY	TIP REG.FOR 1 1/16" TUBE
31	COT-0012W	WASHER/PAD.25ID SS FOR